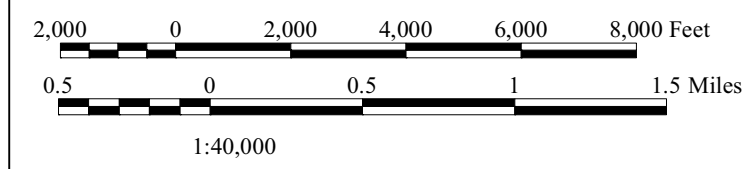


# Community Facilities

## Town of Dover, Vermont

May 2016

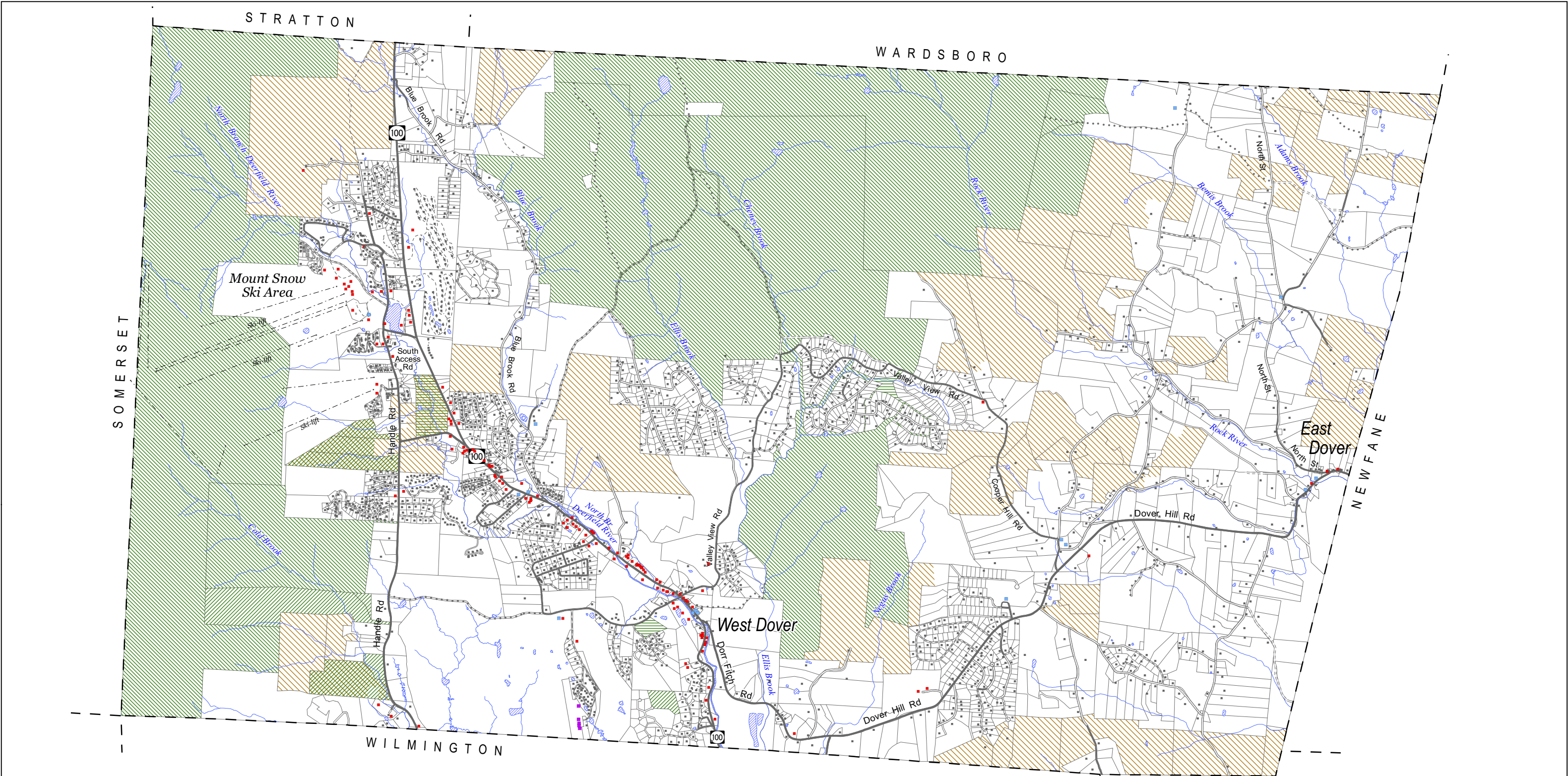


- Electric Transmission Line
- Dover Town Forest
- West Dover Historic District
- North Branch Fire District
- N. B. F. D. sewer service area

Data sources:

- Community facilities were identified by the Dover Planning Commission and located using buildings data from E-911 and Cartographic Technologies.
- The boundary of the Dover Town Forest is from Dover's digital parcel data, maintained by Cartographic Technologies, Inc and Cartographic Associates, Inc.
- The boundary of the North Branch Fire District coincides with the watershed of the North Branch of the Deerfield River in Dover, excluding Cold Brook. Boundary information was developed by WRC using the State of Vermont's watershed data and modifying it using 1:24,000 USGS topographic maps to delineate the Cold Brook watershed.
- The North Branch Fire District sewer service area is represented by parcels that are served by the sewer system. These parcels were identified by Fire District staff and WRC extracted those parcels from Dover's digital parcel data.

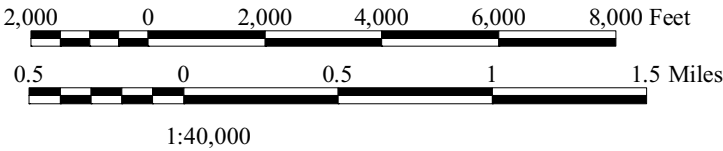




# Existing Land Use

## Town of Dover, Vermont

May 2016



### Building Use:

- Commercial
- Industrial
- Public/Institutional
- Residential

Parcel line

### Parcel status:

- Active agriculture or forestry management plan (parcel enrolled in Use Value Appraisal, 2013)
- Development restriction, private land with conservation easement
- Development restriction, private land with other legal restriction \*\*
- Public land managed for recreation, conservation, and/or open space

\* - not all parcels with other development restrictions mapped

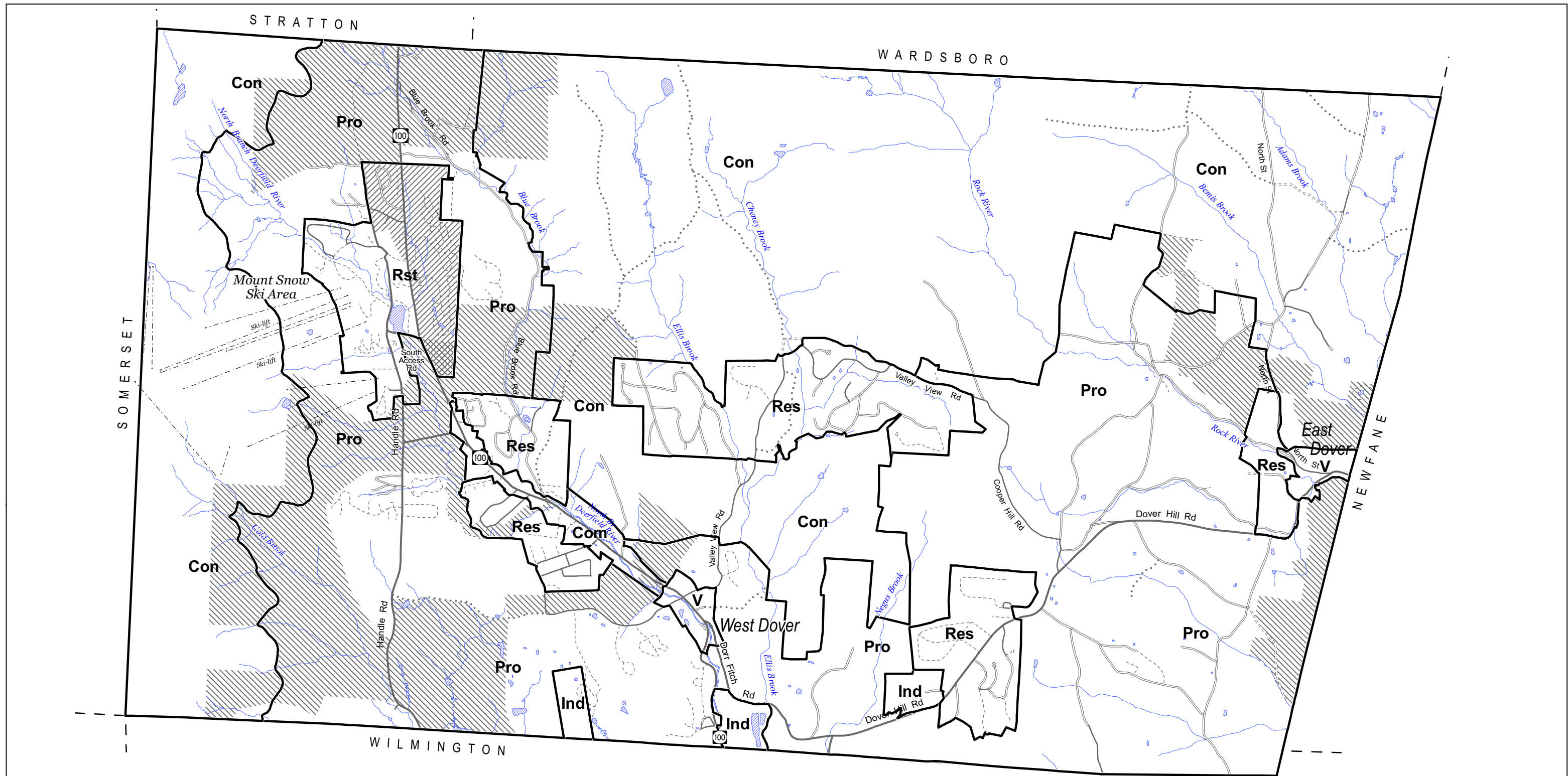
### Data sources:

- Structure locations are from Vermont E911 data, current to 2016.
- Parcel data are from Cartographic Technologies, Inc., Brattleboro, Vt. and are current to 2013.
- Parcels enrolled in Use Value Appraisal were mapped by WRC using 2013 data from the State of Vermont.







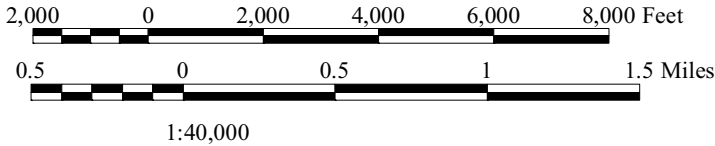


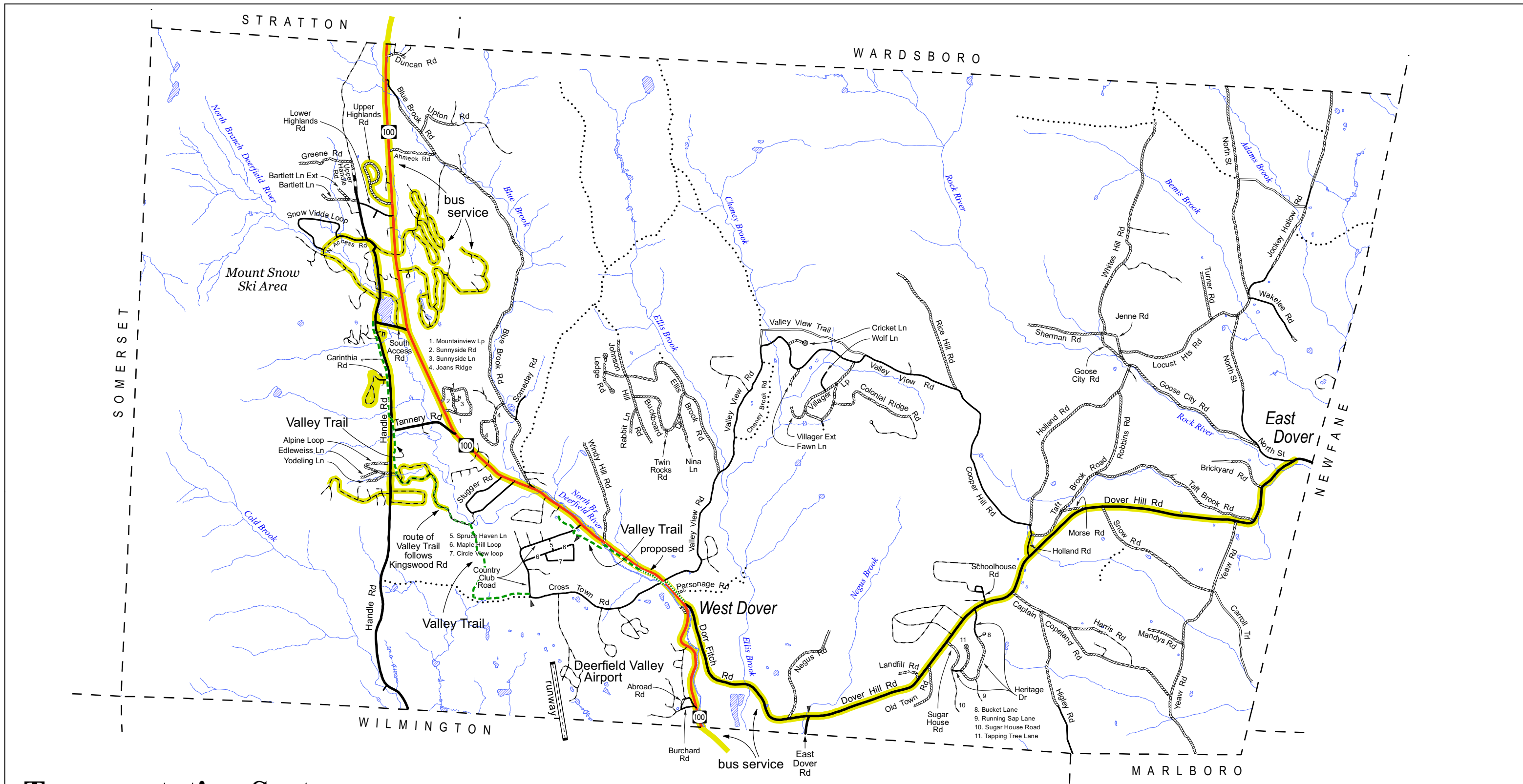
# Proposed Land Use Town of Dover, Vermont

May 2016

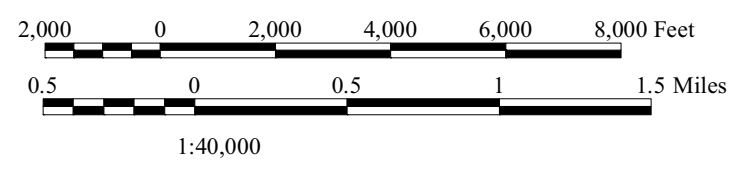
- Con - Resource Conservation
- Pro - Productive Residential
- V - Village
- Res - Residential
- Com - Planned Commercial
- Ind - Light Industrial
- Rst - Resort Center
- Sensitive Wildlife Habitat overlay district
- Vacation overlay district

Data sources:  
- Proposed Land Use district boundary locations are based on Dover's zoning districts. Data were developed by Windham Regional Commission using GIS parcel data and contour data from Cartographic Technologies, Inc., previous zoning and proposed land use data from Judy Bond of GrassRoots GIS, and VGIS base data of roads and streams.





# Transportation System Town of Dover, Vermont May 2016



- State highway
  - Class 2 town highway, paved
  - Class 2 town highway, unpaved
  - Class 3 town highway, paved
  - Class 3 town highway, unpaved
  - Class 4 town highway (unpaved) \*
  - Legal Town Trail \*
  - Private road/drive
  - Bus service - route of The Moover (Deerfield Valley Transit Association)
  - Valley Trail pathway, existing
  - Valley Trail pathway, proposed
- note: only those sections of the Valley Trail with an improved surface are shown
- \* - may be impassable to automobiles

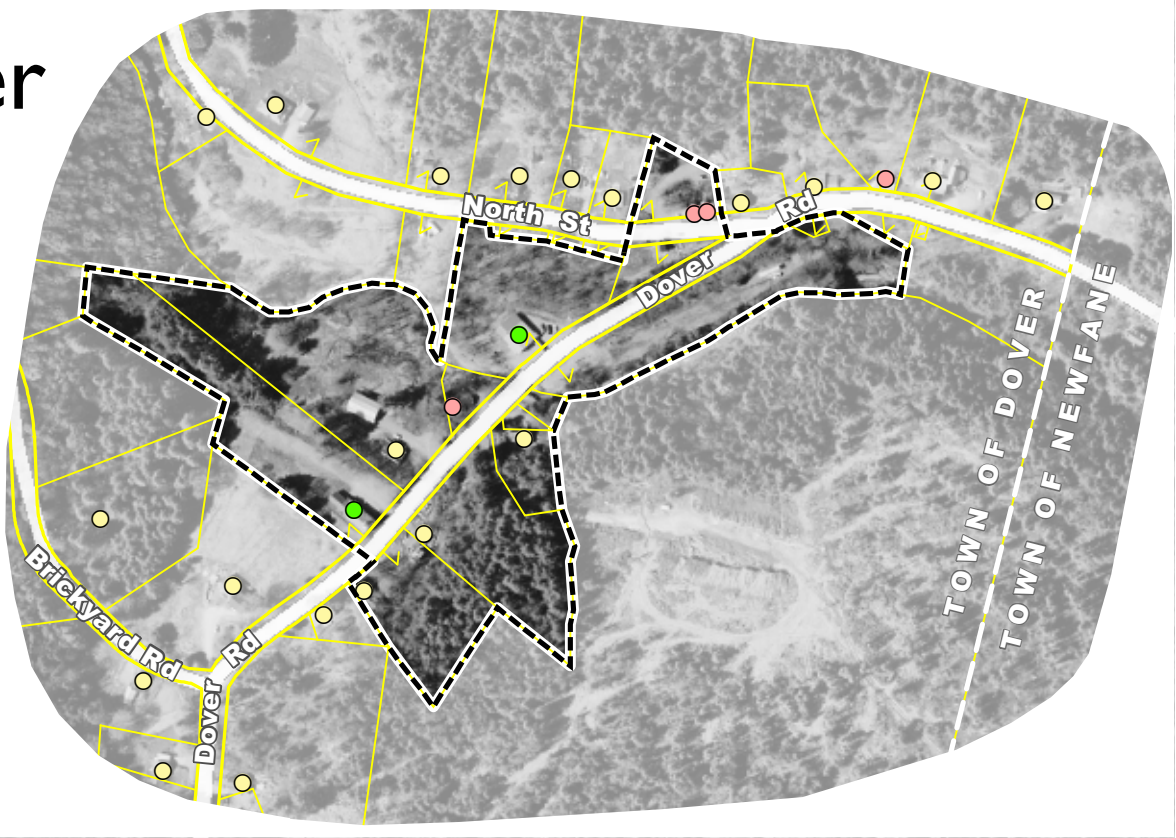
Data sources:

- Highway data are from Vt. Agency of Transportation sources (VGIS data layer RDSnnnn).
- The location of the Valley Trail was developed by Windham Regional Commission using digital orthophotos and guidance from the Town of Dover.
- The route of the Moover (bus service of the Deerfield Valley Transit Authority) is from DVTA information.





# East Dover



# West Dover

## Village Centers Town of Dover, Vermont May 2016



- Designated Village Center
- Parcel boundary
- Commercial building
- Public/Cultural building
- Residential building
- Other

Note:  
- West Dover and East Dover are Designated Village Centers under the Vermont Department of Housing and Community Development. Boundaries were approved by the Vermont Downtown Development Board